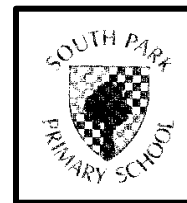


R espect
E quity
A mbitious
C onfident
H appy



South Park Primary School

Relationships Policy

South Lanarkshire Council is committed to providing a safe, nurturing and attachment informed, trauma sensitive environment for all people in its educational establishments.

Here at South Park Primary School, we adopt a nurturing approach towards all pupils, staff and families. Through our work with the Paul Dix approach, we aim to create a welcoming and supportive environment that meets the needs of all learners academically, socially and emotionally. We do this through using a consistent, predictable approach based on routines, expectations and most importantly, relationships.

Our Relationships Policy is underpinned by three core elements;

- **Nurture Principles**
- **Promoting Positive Relationships and Understanding Distressed Behaviours (PPRUDB)**
- **Attachment Informed, Trauma Sensitive Practice**

Nurture

The incorporation of each of these into our approach to daily life at South Park ensures that our pupils are supported in their social and emotional wellbeing.

Children thrive on comfort, recognition, praise and success which in turn impact their self-esteem, relationships and achievements. Our staff, children and wider school community work together to create an ethos of mutual respect using the Six Principles of Nurture;

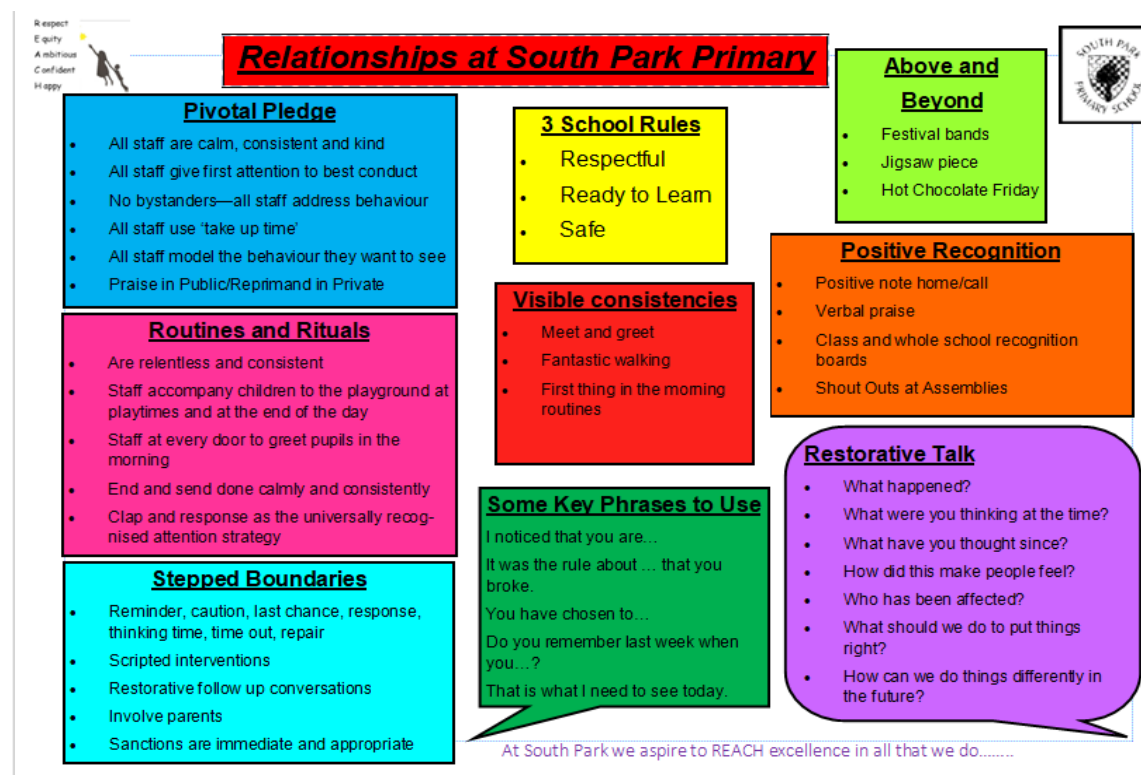
1. Children's learning is understood developmentally
2. The classroom offers a safe base
3. The importance of nurture for the development of wellbeing
4. Language is a vital means of communication
5. All behaviour is communication
6. The importance of transition in children's lives.

At South Park we aspire to REACH excellence in all that we do.....

At South Park, we focus on building positive relationships through using consistent strategies embedded across the whole school. Our staff are role models for respectful relationships leading by example with appropriate communications and behaviours. With our work spent on the Pivotal Approach, we created our own Relationships Blueprint as a clear and coherent visual of how we do relationships at South Park.

Our Relationships Blueprint

We strive at South Park to ensure a Nurturing, Attachment informed environment is experienced by all and as such have created a 'Relationships Blueprint.' This is for everyone at South Park and was consulted and agreed on as part of Respectme. This blueprint is now fully embedded across our school community to promote a fair and consistent approach to relationships and attachment.



At South Park we aspire to REACH excellence in all that we do.....

Daily Routines and Rituals

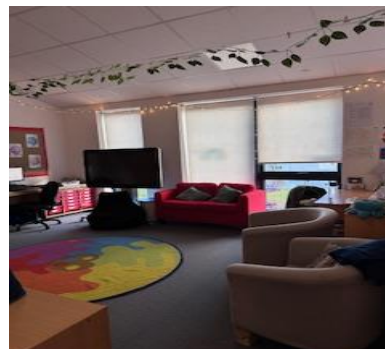
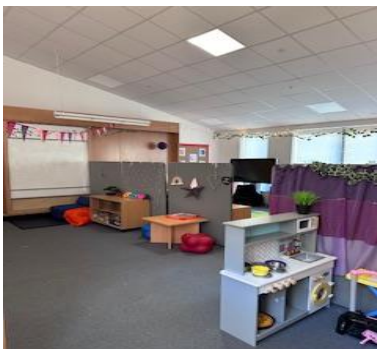
- Staff welcome children and families at every entrance with morning greetings (this is an opportunity to check-in with those who need it)
- All children and staff model '*Fantastic Walking*' (head up, hands behind back on to the sides) and '*Super Standing*' (head up, standing still with hands behind back or by your side) when transitioning around the school.
- A play-based, soft start from 8:50-9:15am across whole school - activities vary depending on stage and relevance to classroom learning
- Admin time (ParentPay, milk list, register)
- No bells are used in the school
- Breakfast is available in Nest for anyone needing something to eat in the morning.

Nurture Spaces in South Park

The Nest

'The Nest' is a safe space in our school where 'children learn to fly'. We established this room in 2017 - with the aim of creating a designated calm, 'family-like' environment where staff could facilitate nurture groups.

Our aim in The Nest is to support children in order for them to be ready to learn. Two members of teaching staff, pupil support assistant and a member of Nursery staff run a variety of groups every week to support areas such as sensory input/output, friendships, emotional regulation, neurodivergent learners as well as classic and semi-classic nurture groups. Our team also works with individual children who have experienced bereavement or other trauma utilising different therapeutic approaches depending on the needs of the child.



At South Park we aspire to REACH excellence in all that we do.....

The Sanctuary

Our school is fortunate to have another dedicated space to support our children and families named 'The Sanctuary'. This room is a multi-function space used for facilitating nurture groups with our older children as well as targeted support led by our Specialist Support Teacher and other outer agencies.

It is also a safe space where we offer parent groups twice a week and individual parental support for families. Our parent groups have established a stronger sense of community helping parents build positive relationships, sharing experiences and offering support to one another.



The Jungle

'The Jungle' was established to create an enclosed, sensory focused area for children to self and co-regulate. We utilised our Participatory Budget to purchase a variety of sensory stimulating and calming resources to create this safe space that any learner can access if required.



At South Park we aspire to REACH excellence in all that we do.....

Cosy Corners

We recognise that for children to be ready to learn, they must first feel safe in all areas of our school. In classrooms and in other areas dotted around our school, you will find cosy corners that children are able to access if they are needing time out. Cosy corners offer a warm, comfortable space to sit or lie down, with sensory resources available to help children self-regulate. Children have a voice as to how they'd like their cosy corners to be in their classrooms and collaborate with staff to establish these.

Wider School Nurturing Opportunities

Forest Schools

A member of our Nursery staff is FOELA trained and 6 other members of staff have received

Froebelian Practice

Two members of our Nursery Staff are Froebel Trained with the approach being adopted in our Early

Promoting Positive Relationships and Understanding Distressed Behaviours

South Lanarkshire Council are encouraging establishments to 'develop and implement a relationships approach to understanding distressed behaviour'.
(South Lanarkshire Council, 2019).

At South Park we aspire to REACH excellence in all that we do.....

At South Park, our staff strive to build and nourish positive relationships with pupils and their families.

- All staff respond to behaviour with consistent, patient and compassionate manner.
- Staff refer to SLC's Attachment Strategy:
 - See the 'whole person'
 - Hear their voice
 - Recognise behaviour as communication
 - Respond with compassion
 - Act to make a difference
 - Believe in change
- All staff follow same approach with dealing with distressed behaviour; ensure child/children are safe, validate child's feelings, offer support to co/self-regulate, when appropriate, have a restorative conversation
- Establish expectations and implement appropriate consequences.
- Positive behaviour is praised and recognised in public.

SLC Attachment Strategy

Attachment Informed, Trauma Sensitive Establishment

In line with South Lanarkshire's Attachment Strategy, South Park is working towards becoming an Attachment Informed, Trauma Sensitive Establishment. We aim to continue to embed the nurture principles and our relationships blueprint across our whole school community.

As part of our whole school nurturing approach, our staff have dedicated time to enhancing their own skills and knowledge around attachment and its importance in a school setting. We believe it is vital that all staff across the school use the same consistent approach towards relationships with others. We are committed to understanding the child as a whole, considering how trauma and attachment injuries may impact behaviour and learning. We communicate this through our language, empathy and consistent routines and expectations. As well as our Nurture groups for our pupils, we recognise the importance of building positive, supportive relationships with the whole family and offer parental support groups to help build a community network for our families. We also aim to provide pupils, families and staff with more opportunities to better

At South Park we aspire to REACH excellence in all that we do.....

understand attachment and trauma through our school Health and Wellbeing curriculum, parent workshops and staff training.

Curriculum

At South Park, we strive to promote a values based curriculum, where *Respect, Equity, Ambitious, Confident* and *Happy* are embedded throughout our learning and teaching. Our bespoke approach to delivering the Curriculum for Excellence is built on the foundations that children need to feel safe, nurtured and respected in order to feel ready to learn. The nurture principles and attachment informed practice and intertwined in our learning and teaching which is evident in the relationships between staff and children. Our Health and Wellbeing curriculum encompasses the four capacities, CfE benchmarks and Boxall Targets whilst using resources such as RespectMe and Healthy Schools.

Consultation

To create this policy; we set up a Policy Review Working Group which included; staff, parents, pupils and members of the wider community.

We asked children and young people and they said...

The teachers ask me how I am and notice when I am sad. It makes me feel.

I know that even though I don't go to The Nest I still

Parents and carers told us...

My kids feel supported and cared for. I know that if they need someone to talk to, they feel comfortable to speak to

The staff go above and beyond to help us. Everyone is approachable. I am really grateful for all of their support throughout the years.

Staff and Members of the wider Community said...

I think that the positive relationships at South Park are the backbone for the ethos of our school. The relationships

I think the school community have strong, positive relationships. The staff are a great support network, we have a very nurturing environment here for

At South Park we aspire to REACH excellence in all that we do.....

Policy Evaluation and Review

Policy review and evaluation will take place in March 2025.